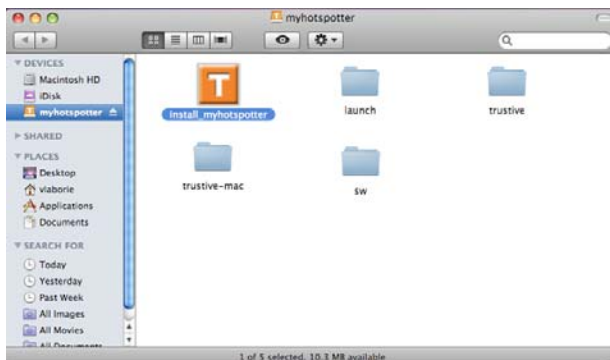


MyHotspotter for MacBook Installation Guide

1) Download MyHotspotter

Download MyHotspotter for MacBook by going to <http://www.trustive.com/myhotspotter/macbook/download> or by clicking on the corresponding download link on www.trustive.com.

The download should only take 1 - 2 minutes. When the download is complete, the Trustive disk will appear on your desktop.



2) Install MyHotspotter

If the finder screen doesn't open automatically, double click on the Trustive disk to open it manually.

Click on the Trustive install_myhotspotter icon to launch the installation.

3) Warning window

You may see this warning message. Click on "Open" to continue.

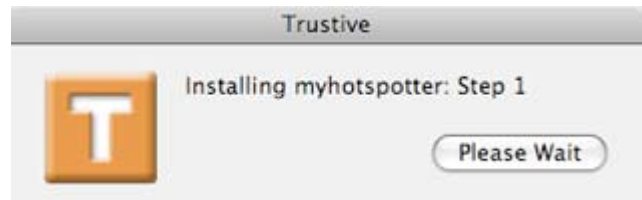


4) Enter administrator credentials

You will need to enter your Administrator username and password before the installation can begin.

5) Launch this installation

If the dialog box on the right is not already visible, click on the jumping Trustive icon on your dock to display it.



6) Installation completed

When the installation is complete, click on "OK" to exit the installation dialog box.

7) Accessing MyHotspotter

MyHotspotter will now be accessible via your "Applications" tab.

If you wish to add MyHotspotter to your dock for ease of access, left click once on the MyHotspotter icon in the applications tab, then drag and drop it into the dock.



8) Launch MyHotspotter

To launch MyHotspotter, double click on the orange T icon either in your dock or in your Applications menu.

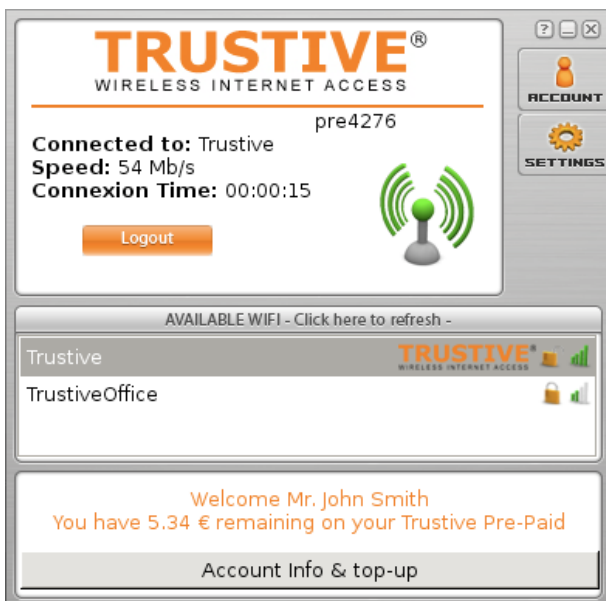


On first launch you will be reminded that MyHotspotter was downloaded from the internet. Click on "Open" to continue with the launch.

9) Enter your credentials

On first use, MyHotspotter will inform you that you need to enter and save your Trustive credentials.

To do this, click on the Account icon, type in your Trustive username and password in the corresponding boxes and then click "save". Don't worry, you will only need to do this once!



10) Connecting to a Trustive hotspot

All available hotspots (WiFi networks) are listed in the "Available WiFi" box and Trustive hotspots will be identified with the Trustive logo. To access a Trustive hotspot, simply double click on the hotspot.

11) Disconnecting from a Trustive hotspot

When you are ready to disconnect, simply click on the logout button.